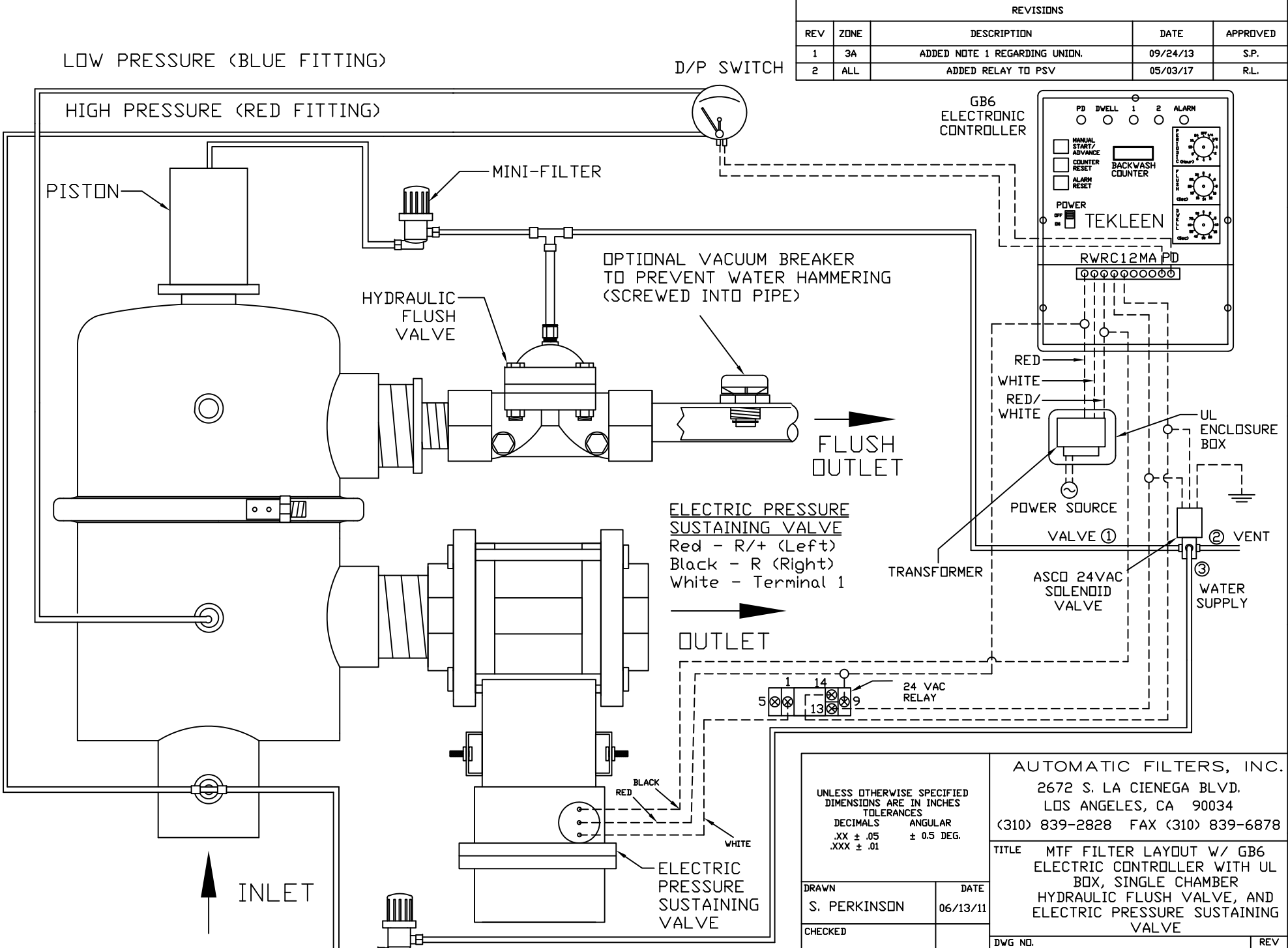


REVISIONS				
REV	ZONE	DESCRIPTION	DATE	APPROVED
1	3A	ADDED NOTE 1 REGARDING UNION.	09/24/13	S.P.
2	ALL	ADDED RELAY TO PSV	05/03/17	R.L.



Junction ○
 Electric Connection - - - -
 Hydraulic Connection = = = =

NOTES:
 1. IT IS RECOMMENDED THAT A UNION BE INSTALLED BETWEEN THE FLUSH VALVE AND FLUSH LINE FOR EASE OF MAINTENANCE.

UNLESS OTHERWISE SPECIFIED
 DIMENSIONS ARE IN INCHES
 TOLERANCES
 DECIMALS ANGULAR
 .XX ± .05 ± 0.5 DEG.
 .XXX ± .01

AUTOMATIC FILTERS, INC.
 2672 S. LA CIENEGA BLVD.
 LOS ANGELES, CA 90034
 (310) 839-2828 FAX (310) 839-6878

TITLE MTF FILTER LAYOUT W/ GB6 ELECTRIC CONTROLLER WITH UL BOX, SINGLE CHAMBER HYDRAULIC FLUSH VALVE, AND ELECTRIC PRESSURE SUSTAINING VALVE

DRAWN	DATE
S. PERKINSON	06/13/11
CHECKED	
DESIGN	

DWG NO.	REV
WIRE-MTFGB6-HFV-PSV-LAY-01	2
NOT TO SCALE	SHEET 1 OF 1