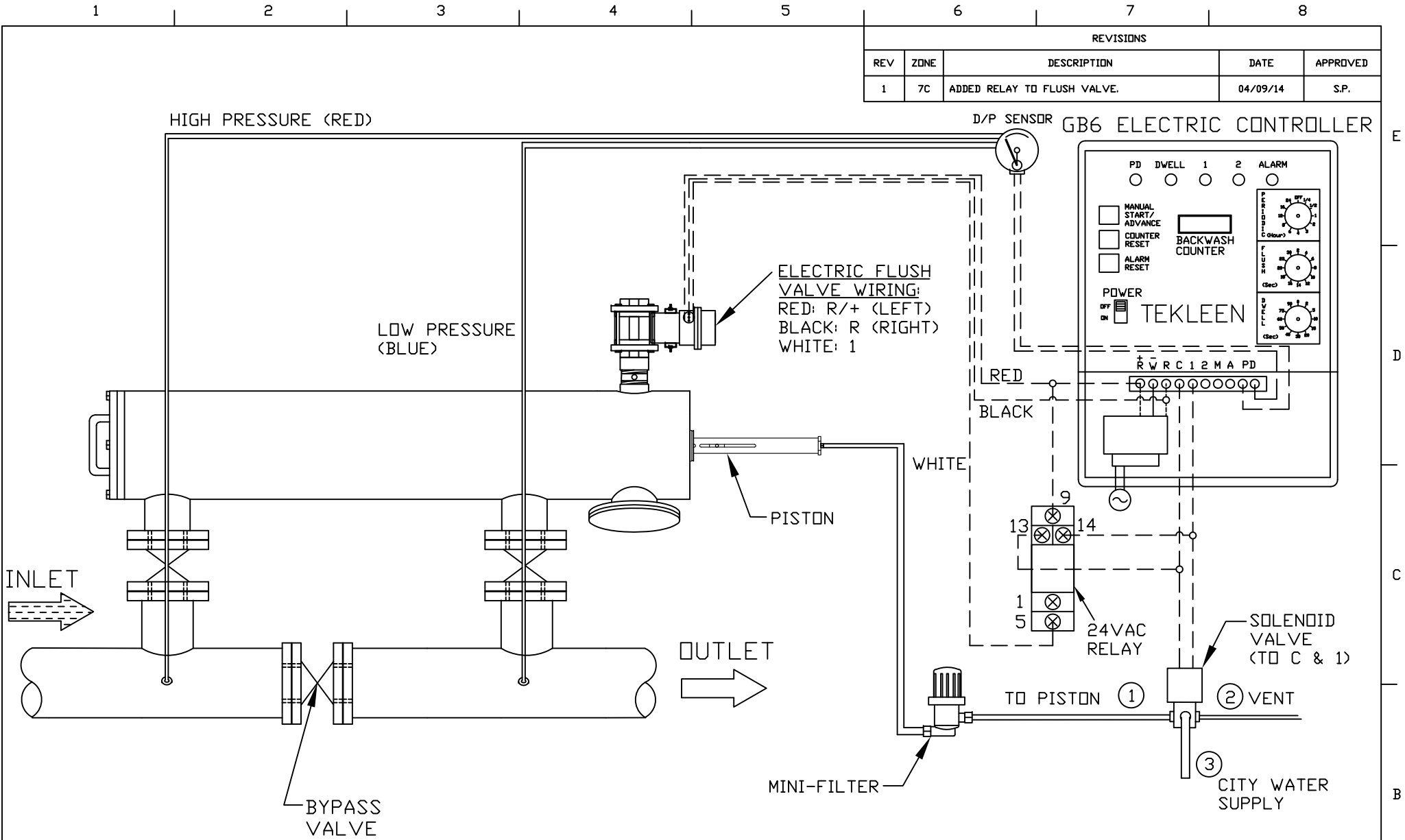
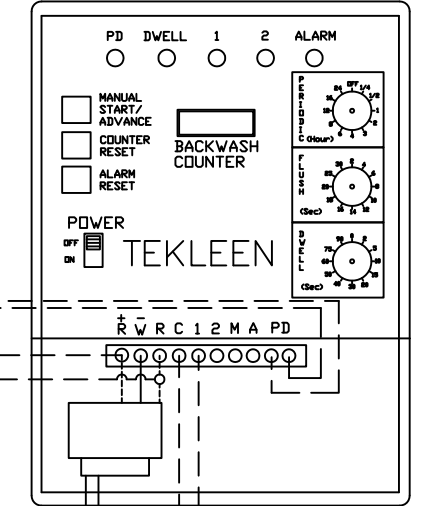


REVISIONS				
REV	ZONE	DESCRIPTION	DATE	APPROVED
1	7C	ADDED RELAY TO FLUSH VALVE.	04/09/14	S.P.



ELECTRIC FLUSH VALVE WIRING:
 RED: R/+ (LEFT)
 BLACK: R (RIGHT)
 WHITE: 1

D/P SENSOR GB6 ELECTRIC CONTROLLER



RED
BLACK

WHITE

24VAC RELAY

SOLENOID VALVE (TO C & 1)

TO PISTON ①

② VENT

③ CITY WATER SUPPLY

INLET

OUTLET

BYPASS VALVE

PISTON

MINI-FILTER

HIGH PRESSURE (RED)

LOW PRESSURE (BLUE)

○	JUNCTION
◌	NO JUNCTION
---	ELECTRICAL CONNECTION
==	HYDRAULIC CONNECTION

NOTES:
 1. RELAY IS LOCATED UNDERNEATH CONTROLLER BOARD.

UNLESS OTHERWISE SPECIFIED DIMENSIONS ARE IN INCHES TOLERANCES		AUTOMATIC FILTERS, INC. 2672 S. LA CIENEGA BLVD. LOS ANGELES, CA 90034 (310) 839-2828 FAX (310) 839-6878	
DECIMALS .XX ± .05 .XXX ± .01	ANGULAR ± 0.5 DEG.	TITLE WIRING LAYOUT FOR ABW FILTER WITH GB6 CONTROLLER, ELECTRIC BALL VALVE, AND SOLENOID VENT FOR PISTON	
DRAWN S. PERKINSON	DATE 07/22/11	SIZE A	DWG NO. WIRE-ABWGB6-EFV-LAY-01
CHECKED		REV 1	
DESIGN FOR:		NOT TO SCALE	SHEET 1 OF 1