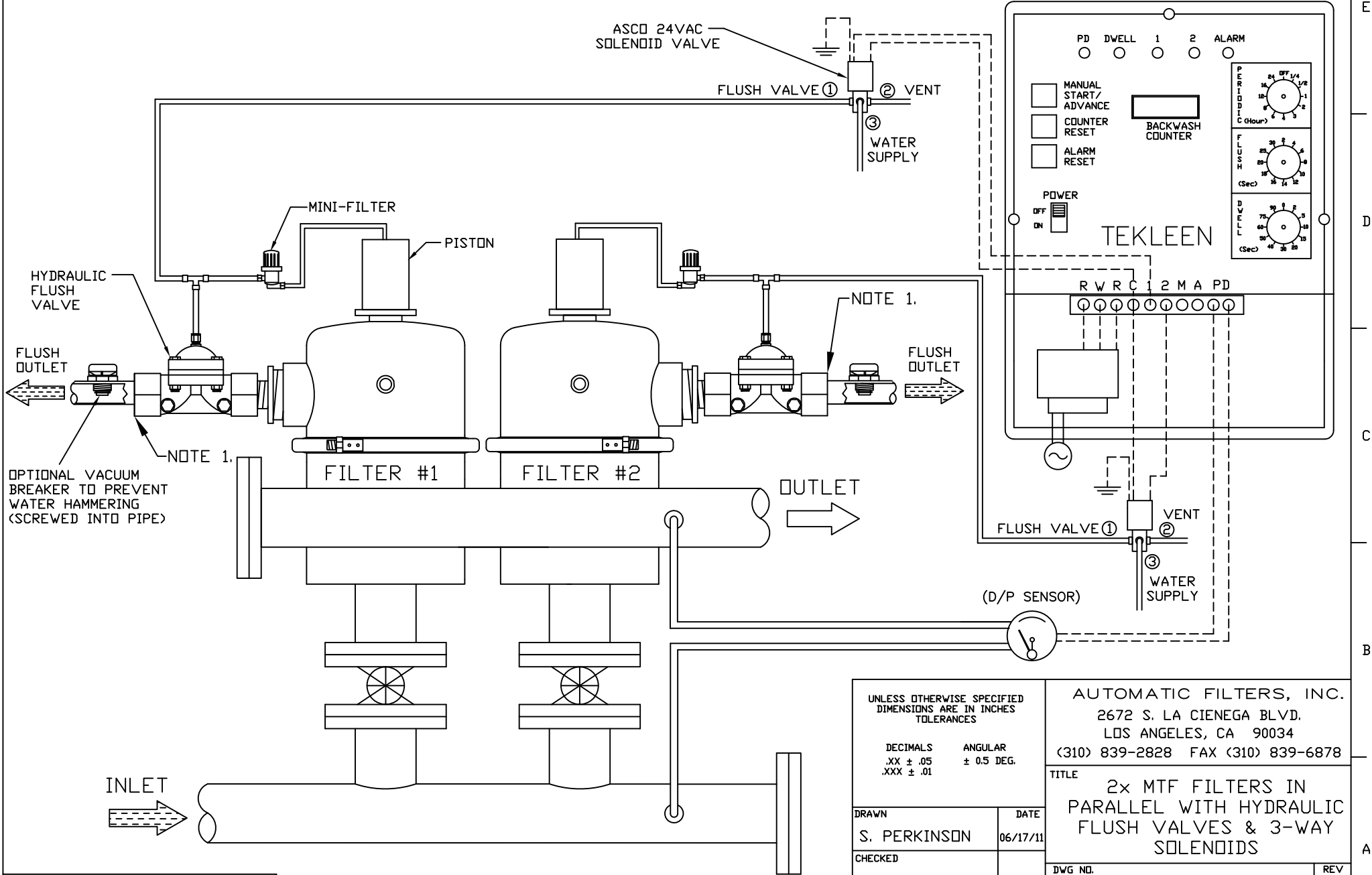


REVISIONS				
REV	ZONE	DESCRIPTION	DATE	APPROVED
1	3A	ADDED NOTE 1 REGARDING UNION.	09/24/13	S.P.

GB7 ELECTRIC CONTROLLER



----- ELECTRICAL CONNECTION
 ===== HYDRAULIC CONNECTION

NOTES:
 1. IT IS RECOMMENDED THAT A UNION BE INSTALLED BETWEEN THE FLUSH VALVE AND FLUSH LINE FOR EASE OF MAINTENANCE.

UNLESS OTHERWISE SPECIFIED DIMENSIONS ARE IN INCHES TOLERANCES

DECIMALS .XX ± .05 .XXX ± .01	ANGULAR ± 0.5 DEG.
-------------------------------------	-----------------------

DRAWN S. PERKINSON	DATE 06/17/11
CHECKED	
DESIGN FOR:	

AUTOMATIC FILTERS, INC. 2672 S. LA CIENEGA BLVD. LOS ANGELES, CA 90034 (310) 839-2828 FAX (310) 839-6878	
TITLE 2x MTF FILTERS IN PARALLEL WITH HYDRAULIC FLUSH VALVES & 3-WAY SOLENOIDS	
DWG NO. WIRE-2MTFGB7-LAY-06	REV 1
NOT TO SCALE	SHEET 1 OF 1