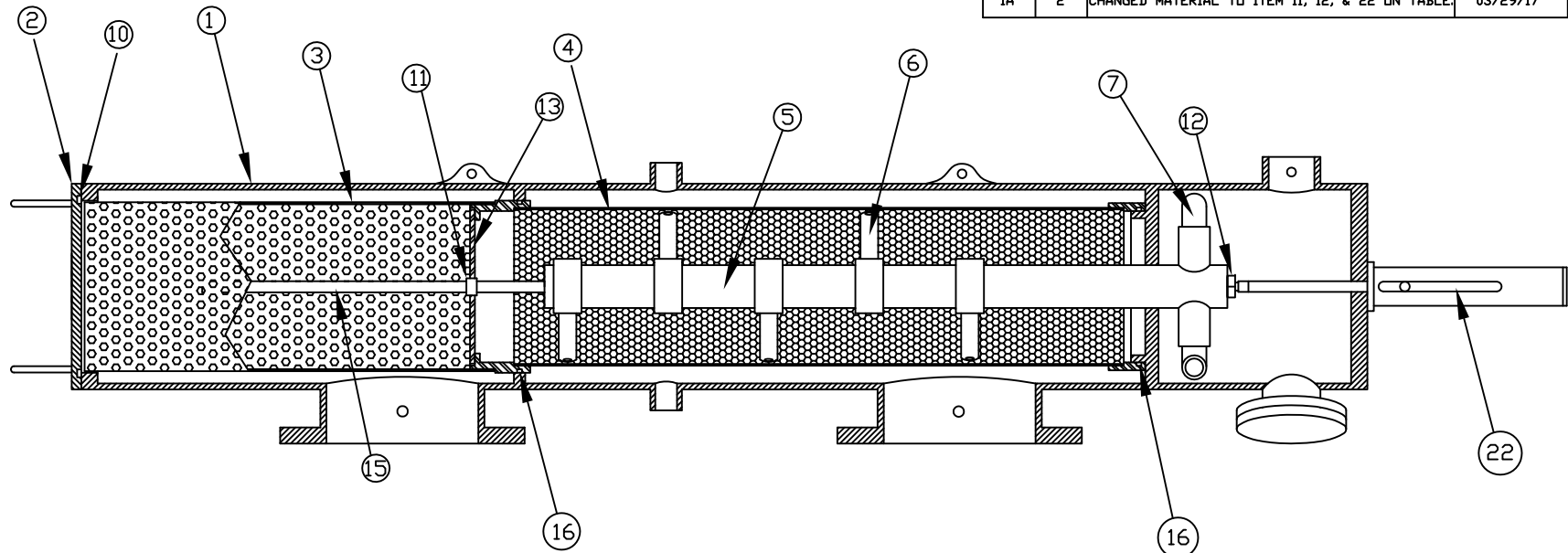


1 2 3 4 5 6 7 8

REVISIONS				
ZONE	REV	DESCRIPTION	DATE	APPROVED
1A	1	ADDED ITEM 13 TO TABLE.	10/01/13	S.P.
1A	2	CHANGED MATERIAL TO ITEM 11, 12, & 22 ON TABLE.	03/29/17	R.L.



PART #	DESCRIPTION	MATERIAL OF CONSTRUCTION
1	Filter Housing	SST 304
2	Cover	SST 304
3	Coarse Screen	SST 316L
4	Fine Screen	SST 316L
5	Dirt Collector	SST 316L
6	Dirt Collector Nozzle	Nylon
7	Hydraulic Motor	SST 316L
10	Cover Seal	Buna
11	Upper Bearing	Duplex
12	Lower Bearing	Duplex
13	Screen Handle	SST 316L
15	Dirt Collector Rod	SST 316L
16	Upper/Lower O-Ring	Buna
22	Piston	SST 316L, Duplex, Delrin, Buna

UNLESS OTHERWISE SPECIFIED DIMENSIONS ARE IN INCHES TOLERANCES DECIMALS ANGULAR .XX ± .05 ± 0.5 DEG. .XXX ± .01		AUTOMATIC FILTERS, INC. 2672 S. LA CIENEGA BLVD. LOS ANGELES, CA 90034 (310) 839-2828 FAX (310) 839-6878	
		TITLE ABWXX-P MATERIAL OF CONSTRUCTION	
DRAWN A. HOCKETT	DATE 7-23-10	DWG NO. ABW-XXP-MOC-01	REV. 2
CHECKED	DESIGN	NOT TO SCALE	SHEET 1 OF 1

E
D
C
B
A