

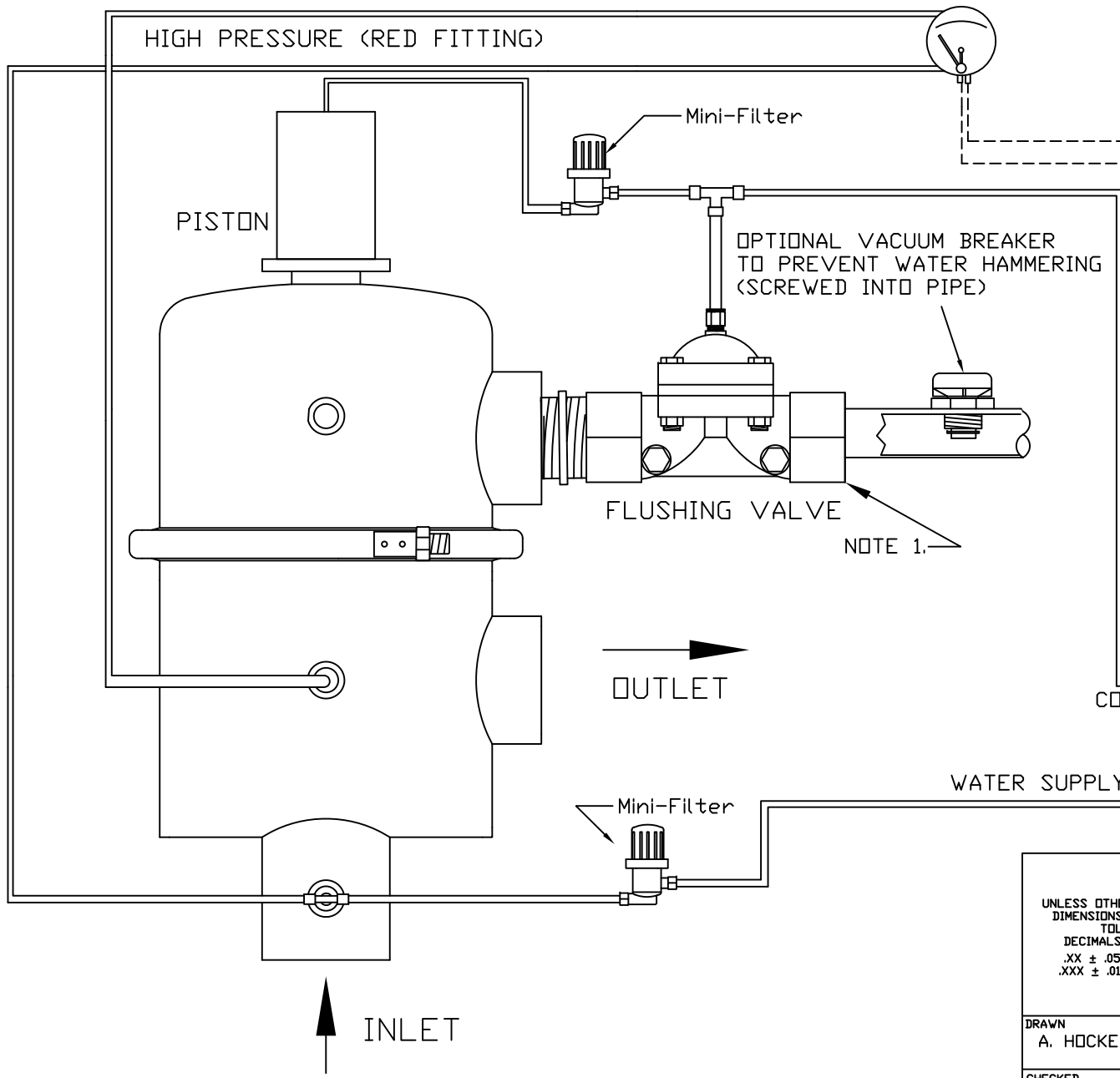
REVISIONS				
REV	ZONE	DESCRIPTION	DATE	APPROVED
1	1A	ADDED NOTE 1 REGARDING UNION.	09/24/13	S.P.

LOW PRESSURE (BLUE FITTING)

HIGH PRESSURE (RED FITTING)

D/P SWITCH

GB6-B CONTROLLER



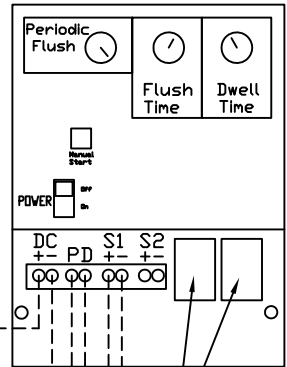
OPTIONAL VACUUM BREAKER  
TO PREVENT WATER HAMMERING  
(SCREWED INTO PIPE)

FLUSHING VALVE

NOTE 1.

OUTLET

WATER SUPPLY



12VDC  
(OPTIONAL)

9V BATTERY  
POWER SUPPLY

RED BLACK

BACCARA 12VDC, 2 WIRE  
SOLENOID VALVE

EXH = VENT

COM = VALVE

IN = WATER SUPPLY

UNLESS OTHERWISE SPECIFIED  
DIMENSIONS ARE IN INCHES  
TOLERANCES  
DECIMALS ANGULAR  
.XX ± .05 ± 0.5 DEG.  
.XXX ± .01

AUTOMATIC FILTERS, INC.  
2672 S. LA CIENEGA BLVD.  
LOS ANGELES, CA 90034  
(310) 839-2828 FAX (310) 839-6878

TITLE  
Wiring Layout for MTFXX  
Filter w/ GB6-B Controller,  
Baccara Solenoid, and Single  
Chamber Hydraulic Valve

DRAWN  
A. HOCKETT

DATE  
8-11-10

CHECKED

DESIGN

DWG NO.  
WIRE-MTFGB6B-LAY-01

REV  
1

NOT SCALE SHEET 1 OF 1

NOTES:  
1. IT IS RECOMMENDED THAT A UNION BE INSTALLED BETWEEN  
THE FLUSH VALVE AND FLUSH LINE FOR EASE OF MAINTENANCE.

INLET