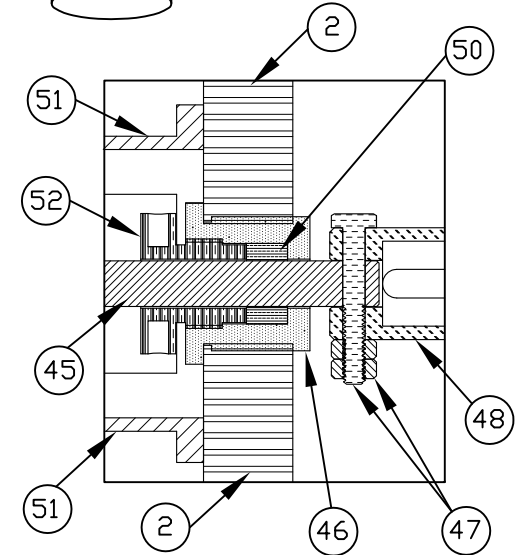
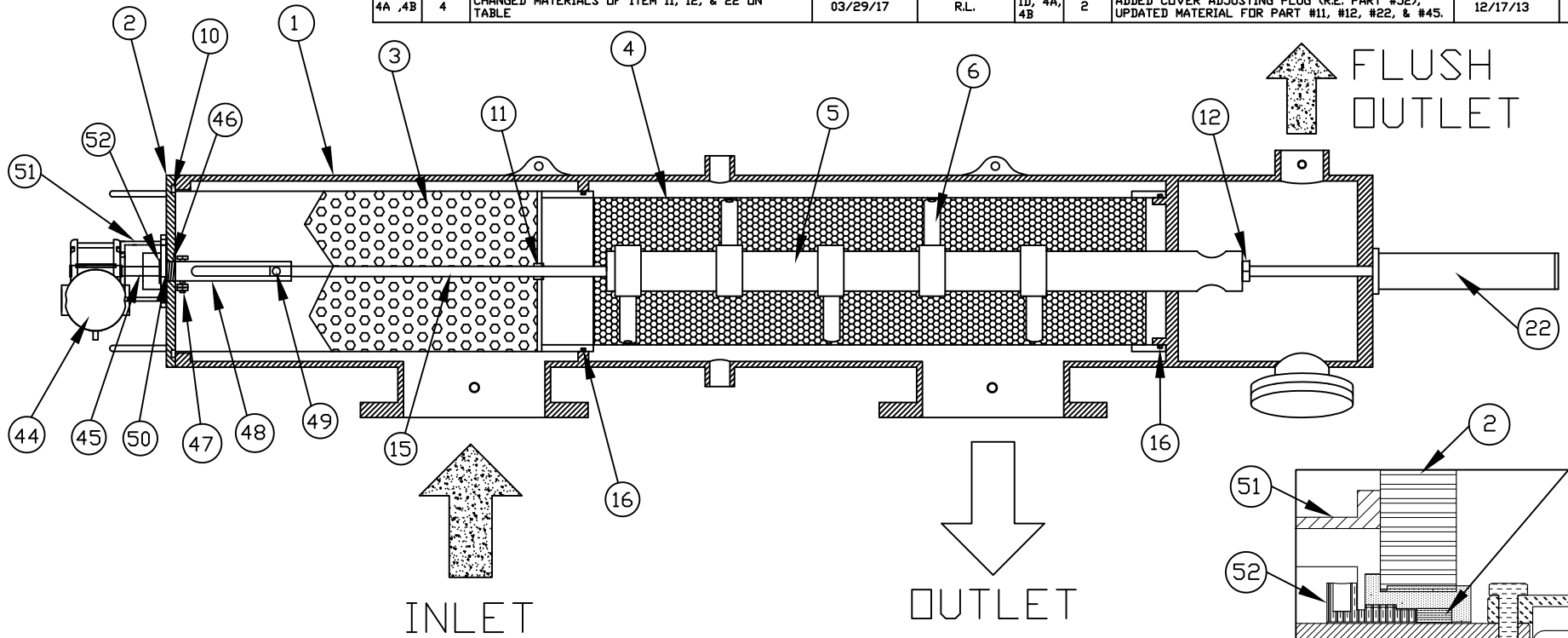


REVISIONS					REVISIONS				
ZONE	REV	DESCRIPTION	DATE	APPROVED	ZONE	REV	DESCRIPTION	DATE	APPROVED
7B, 7C, 8B, 8C	3	ADDED COVER CENTER DETAIL VIEW.	04/23/15	S.P.	1D, 1E, 6D	1	ADDED MOTOR BRACKET & PACKING ROPE, REMOVED HYDRAULIC MOTOR.	01/23/12	S.P.
4A, 4B	4	CHANGED MATERIALS OF ITEM 11, 12, & 22 ON TABLE	03/29/17	R.L.	1D, 4A, 4B	2	ADDED COVER ADJUSTING PLUG (R.E. PART #52), UPDATED MATERIAL FOR PART #11, #12, #22, & #45.	12/17/13	S.P.



PART #	DESCRIPTION	MATERIAL OF CONSTRUCTION
1	Filter Housing	SST 304
2	Cover	SST 304
3	Coarse Screen	SST 316L
4	Fine Screen	SST 316L
5	Dirt Collector	SST 316L
6	Dirt Collector Nozzle	Nylon
10	Cover Seal	Buna
11	Upper Bearing	Duplex
12	Lower Bearing	Duplex
15	Dirt Collector Rod	SST 316L
16	Upper/Lower O-Ring	Buna
22	Piston	SST 316L, Delrin, Buna, Duplex
44	Motor	
45	Motor Drive Shaft	SST 316L, Brass
46	Cover Packing	SST 316L
47	Dirt Collector Extension Bolt w/ 2 Nuts	SST 316L
48	Dirt Collector Extension	SST 316L
49	Dirt Collector Leading Screw	SST 316L
50	Packing Rope	PTFE
51	Motor Bracket	Aluminum
52	Cover Adjusting Plug	SST 316L

COVER
CENTER
DETAIL

UNLESS OTHERWISE SPECIFIED
DIMENSIONS ARE IN INCHES
TOLERANCES
DECIMALS ANGULAR
.XX ± .05 ± 0.5 DEG.
.XXX ± .01

DRAWN	DATE
A. HOCKETT	7-23-10
CHECKED	
DESIGN	

AUTOMATIC FILTERS, INC. 2672 S. LA CIENEGA BLVD. LOS ANGELES, CA 90034 (310) 839-2828 FAX (310) 839-6878	
TITLE LPFXX-P FILTER MATERIAL OF CONSTRUCTION	
DWG NO. LPF-XXP-MOC-01	REV 4
NOT TO SCALE	SHEET 1 OF 1