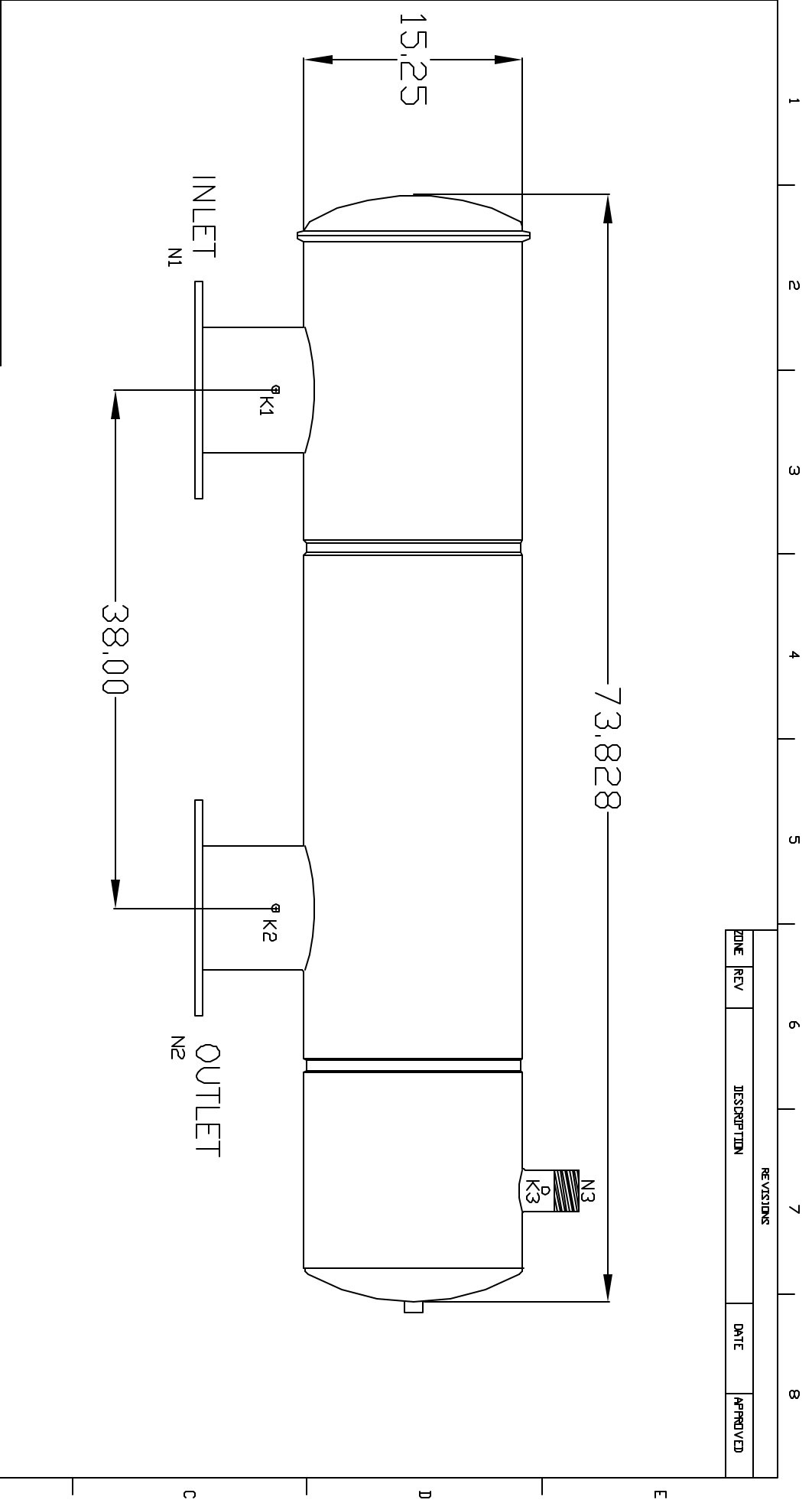


REVISIONS			DATE	APPROVED
ZONE	REV	DESCRIPTION		



TECHNICAL DATA

Flow Rate	Max. 1750 GPM
Screen Size	70 Micron
Working Area	70 Sq.Ft.
Working Temp.	200 deg. F
Working Pressure	120 PSI
Empty Weight	185 lbs.
Full Weight	260 lbs.

NOZZLE	CONNECTION	TYPE OF CONNECTION	SIZE	RATING
K1	Hi. Press. Conn.	Threaded	1/4" NPT(2)	150 lbs. F.F.
K2	Low Press. Conn.	Threaded	1/4" NPT(2)	150 lbs. F.F.
K3	Flushoutlet Conn.	Threaded	1/4" NPT(2)	
N1	Inlet	Flanged	8"	
N2	Outlet	Flanged	8"	
N3	Flushoutlet	Threaded	2" NPT	

UNLESS OTHERWISE SPECIFIED
DIMENSIONS ARE IN INCHES
TOLERANCES
DECIMALS ANGULAR
XX ± .05 ± 0.5 DEG.
.XXX ± .01

AUTOMATIC FILTERS, INC.
2672 S. LA CIENEGA BLVD.
LOS ANGELES, CA 90034
(310) 839-2828 FAX (310) 839-6878

DRAWN	DATE
Daniel Stenberg	5-02-07

DBF 8-SP

CHECKED	SIZE	DWG NO.	REV
Daniel Stenberg	A	DBF 10-P	0
DESIGN	not to scale		SHEET OF