

1 2 3 4 5 6 7 8

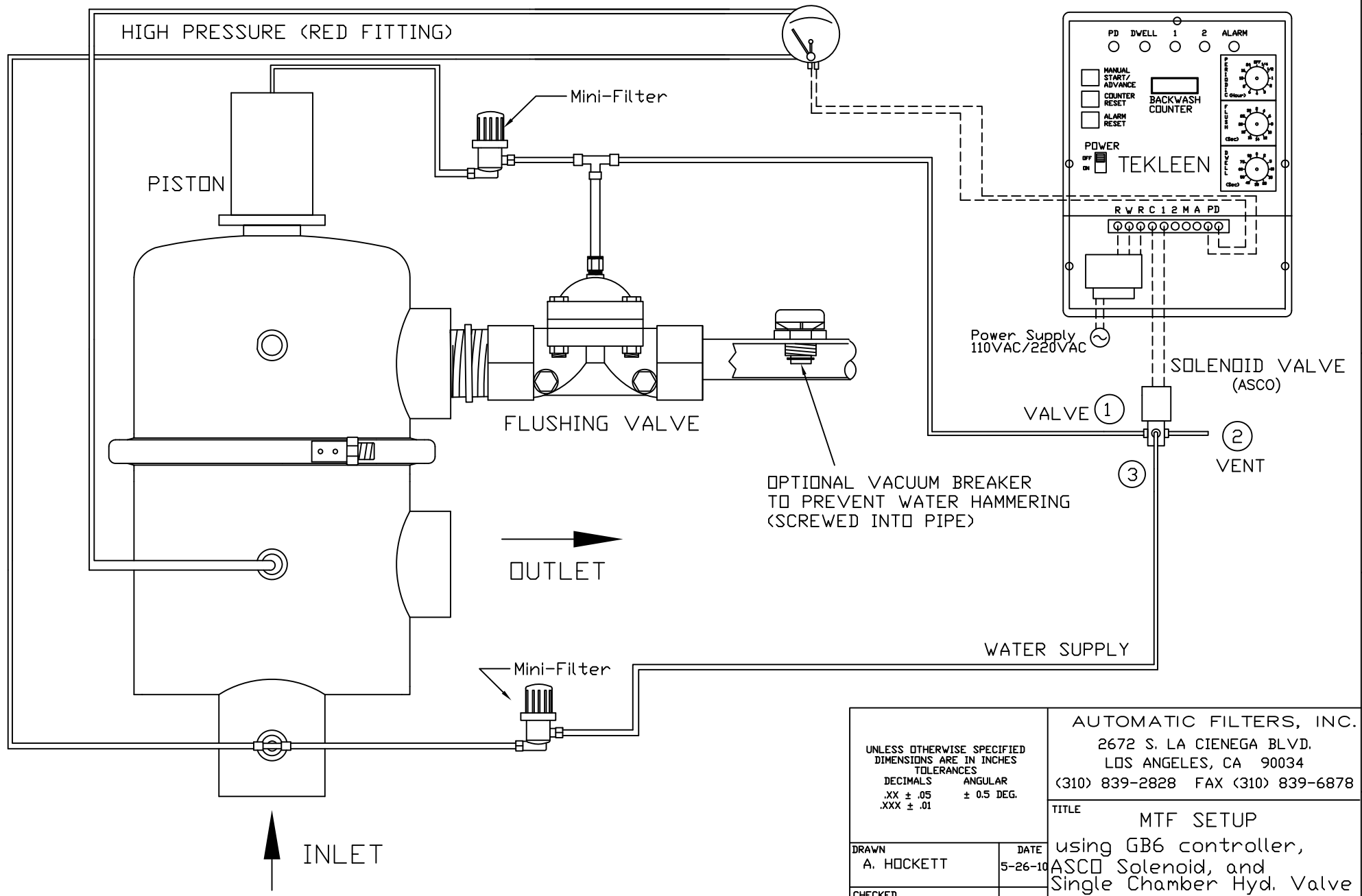
REVISIONS				
ZONE	REV	DESCRIPTION	DATE	APPROVED

LOW PRESSURE (BLUE FITTING)

HIGH PRESSURE (RED FITTING)

D/P SWITCH

GB6 ELECTRIC CONTROLLER



OPTIONAL VACUUM BREAKER TO PREVENT WATER HAMMERING (SCREWED INTO PIPE)

UNLESS OTHERWISE SPECIFIED DIMENSIONS ARE IN INCHES TOLERANCES DECIMALS ANGULAR .XX ± .05 ± 0.5 DEG. .XXX ± .01		AUTOMATIC FILTERS, INC. 2672 S. LA CIENEGA BLVD. LOS ANGELES, CA 90034 (310) 839-2828 FAX (310) 839-6878		
		TITLE MTF SETUP using GB6 controller, ASCO Solenoid, and Single Chamber Hyd. Valve		
DRAWN A. HOCKETT	DATE 5-26-10	SIZE A	DWG NO. MTF-GB6-HFV	REV 0
CHECKED	DESIGN	NOT SCALE		SHEET 1 OF 1

E
D
C
B
A