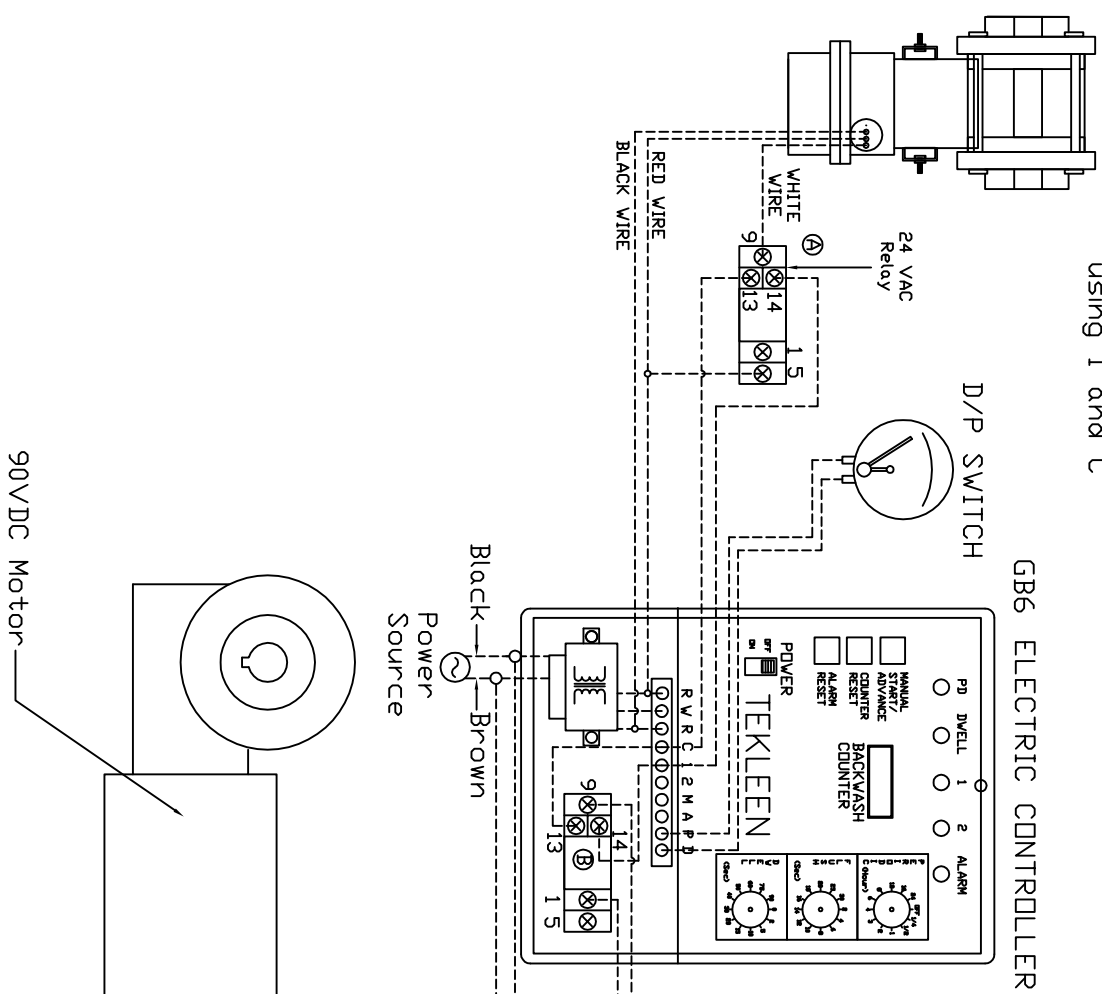


BALL VALVE WIRING

Red: R (Left)
 Black: R (Right)
 White: RELAY to R (Left) using 1 and C

REVISIONS				
ZONE	REV	DESCRIPTION	DATE	APPROVED
2D	A	Added Relay to Flush Valve	8/26/10	A.H.
4C	B	Clarified Wiring in Motor Relay.	07/27/11	S.P.
7D, 7E	C	No Functional Change. SWITCHED BLACK & WHITE WIRES OF MOTOR.	12/22/11	S.P.



Junction
 No Junction
 Wire to Motor
 Wire to Capacitor

UNLESS OTHERWISE SPECIFIED DIMENSIONS ARE IN INCHES
 DECIMALS ANGULAR
 XX ± .05 ± 0.5 DEG.
 XXX ± .01

AUTOMATIC FILTERS, INC.
 2672 S. LA CIENEGA BLVD.
 LOS ANGELES, CA 90034
 (310) 839-2828 FAX (310) 839-6878

TITLE
 Controller Wiring for LPFXX with GB6
 Controller, Electric Ball Valve, and
 90 VDC Motor

DRAWN A. HOCKETT	DATE 8-17-10
CHECKED	
DESIGN	

SIZE A	DWG NO. WIRE-LPFG6-CON-01A	REV C
NDT TO SCALE		SHEET 1 OF 1