

1

2

3

4

5

6

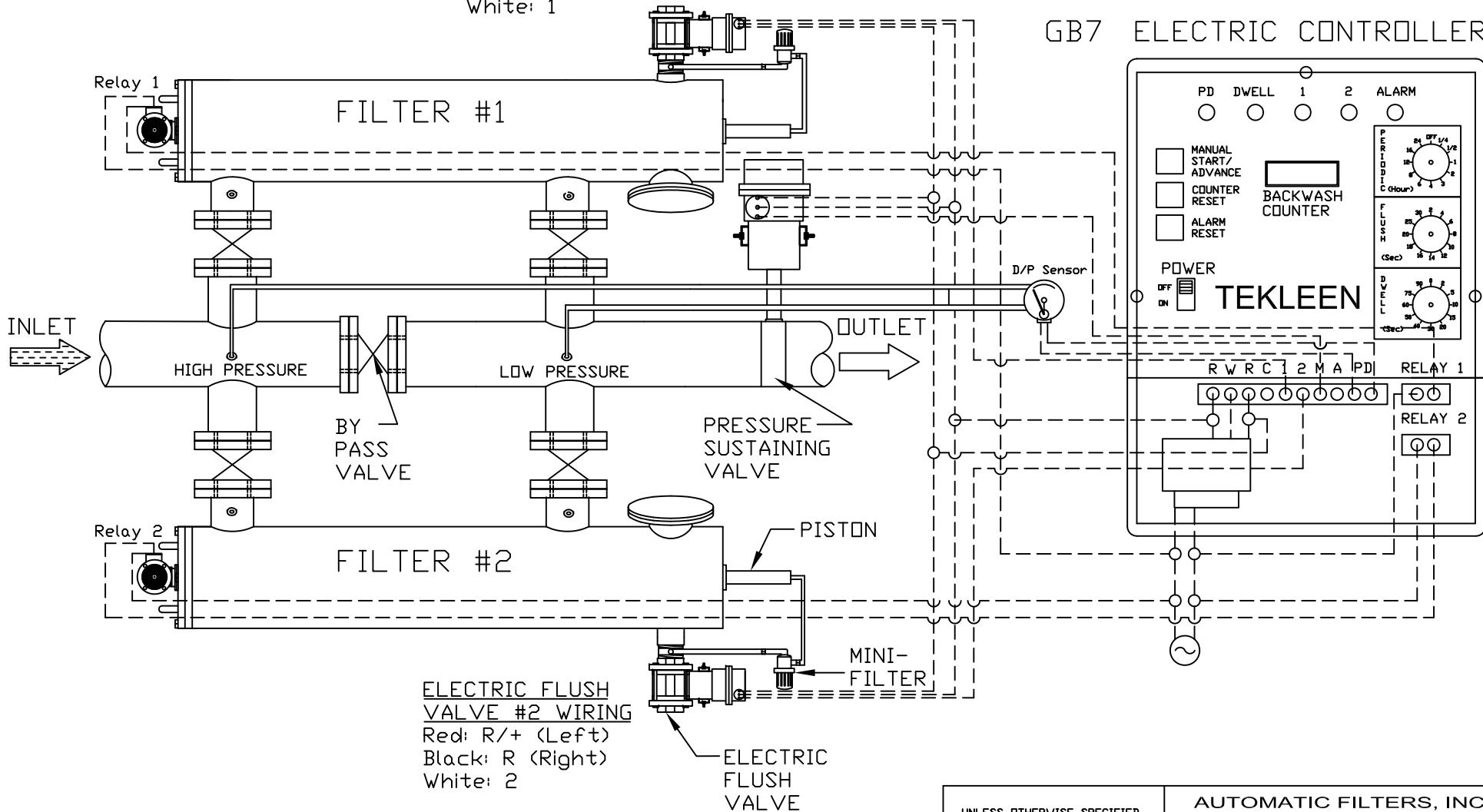
7

8



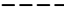
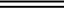
REVISIONS				
REV	ZONE	DESCRIPTION	DATE	APPROVED

ELECTRIC FLUSH VALVE #1 WIRING
 Red: R/+ (Left)
 Black: R (Right)
 White: 1

GB7 ELECTRIC CONTROLLER



ELECTRIC FLUSH VALVE #2 WIRING
 Red: R/+ (Left)
 Black: R (Right)
 White: 2

Junction 
 No Junction 
 Wire 
 Hydraulic Tube 

UNLESS OTHERWISE SPECIFIED DIMENSIONS ARE IN INCHES TOLERANCES		AUTOMATIC FILTERS, INC. 2672 S. LA CIENEGA BLVD. LOS ANGELES, CA 90034 (310) 839-2828 FAX (310) 839-6878		
DECIMALS .XX ± .05 .XXX ± .01	ANGULAR ± 0.5 DEG.	TITLE 2x LPF FILTERS IN PARALLEL W/ GB7 ELECTRIC CONTROLLER, ELECTRIC FLUSH VALVES, & PRESSURE SUSTAINING VALVE		
DRAWN S. PERKINSON	DATE 09/12/11	SIZE A	DWG NO. WIRE-2LPFGB7-LAY-05	REV N/A
DESIGN FOR:		Not To Scale		SHEET 1 OF 1

E
D
C
B
A