

Actuator: EH2 Series 000-66-W1

OPERATION: 1/4 Turn CCW (OPEN) / CW (CLOSE)

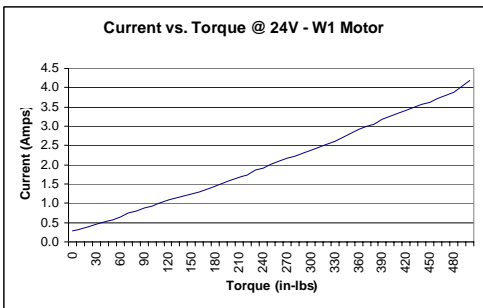
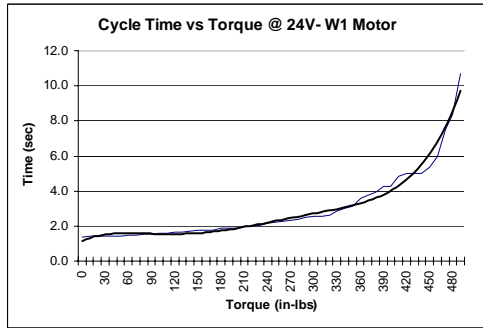
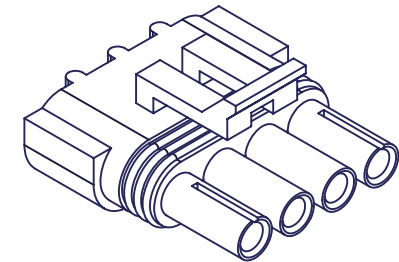
CASE: NEMA 6P (Immersable)

OPERATING TEMPERATURE: -40~~ 180-F

MOUNTING: No Position Requirements

DUTY CYCLE: 50%

Weatherpack 4-pin Tower



Electrical Connection

INPUT POWER: 24 VAC, 5A

CONTROL SIGNAL POWER: 24 VAC, 120 mA

CONNECTOR: Weatherpack 1201-5797

PIN A: Black (Constant 24 VAC Neutral)

PIN B: Blank

PIN C: White (Signal Switched)

24 VAC (Hot) = Relay Energized (Open)

0 VAC = Relay De-energized (Close)

PIN D: Red (Constant 24 VAC Line)

CABLE

JACKET: GPT

LENGTH: 15" ~ 18" Free Length

FUSING

Internal, Re-settable 2.5 A Poly Thermal

Disconnect power to reset

Tolerance UOS

0.005"

| | | |
|---|--------------|-----------------|
| TITLE 2" SS FP Ball Valve 1000 WOG EH2 Series Actuator | | |
| SIZE C | | REV 1 |
| MATERIAL | SHEET 1 OF 2 | |

VALVE: 89I

TYPE: 2" Full Port SS CF8M

PRESSURE: 1000 psi max WOG

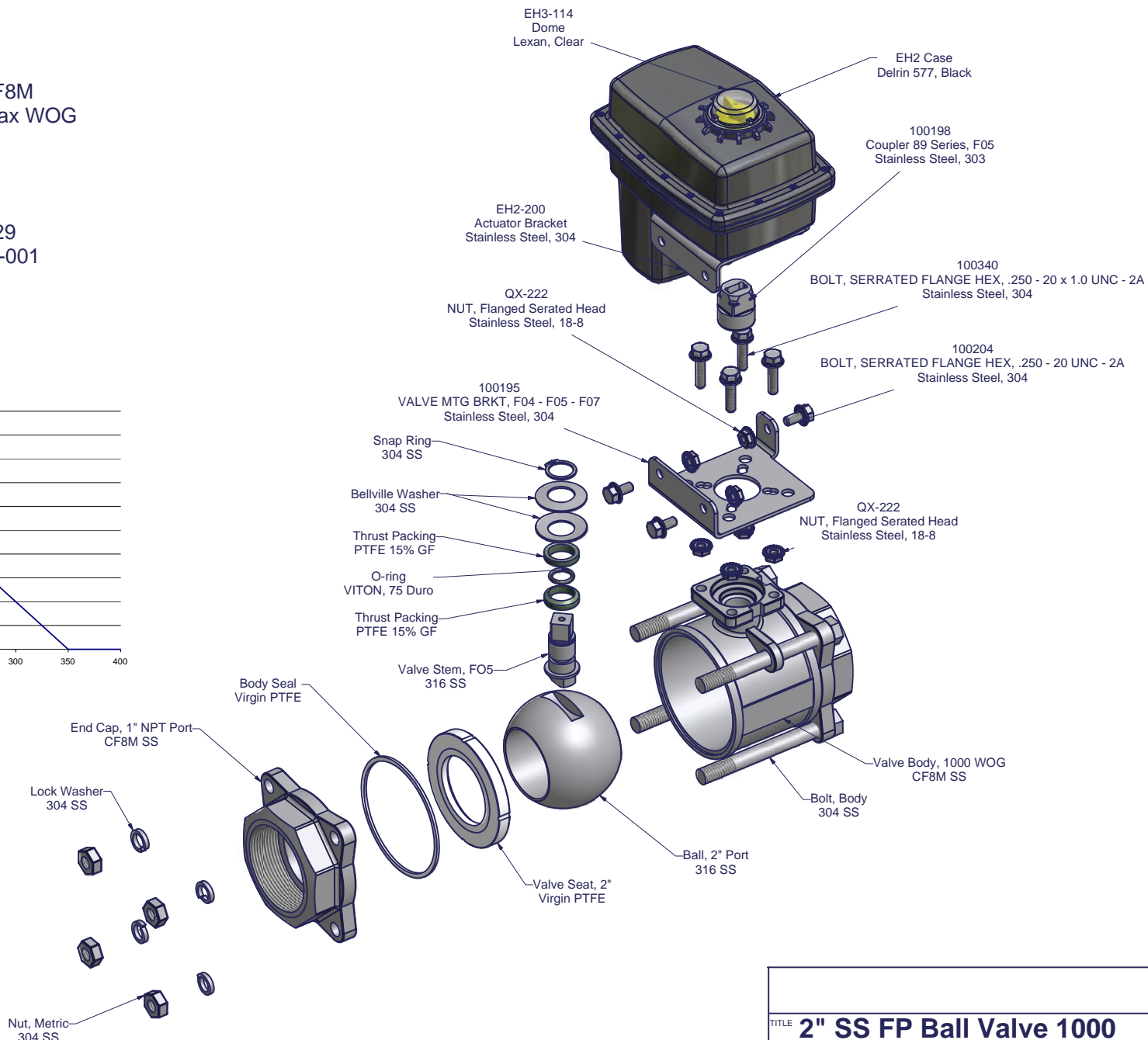
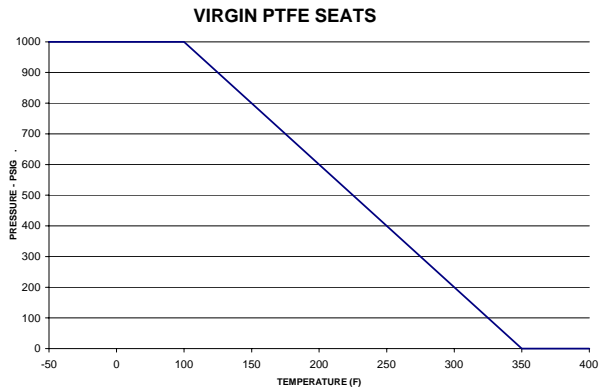
CONNECTION: 2" NPT

Cv: 410

SERVICE PARTS

VALVE SEAL KIT: EH-129

ACTUATOR: 000-66-W1-001



| | | |
|---|--|-----------------|
| TITLE 2" SS FP Ball Valve 1000 WOG EH2 Series Actuator | | |
| SIZE C | | REV 1 |
| MATERIAL | | |
| SHEET 2 OF 2 | | |

Tolerance UOS
`0.005"