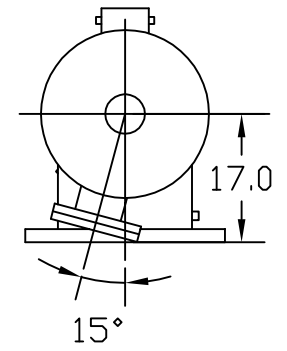
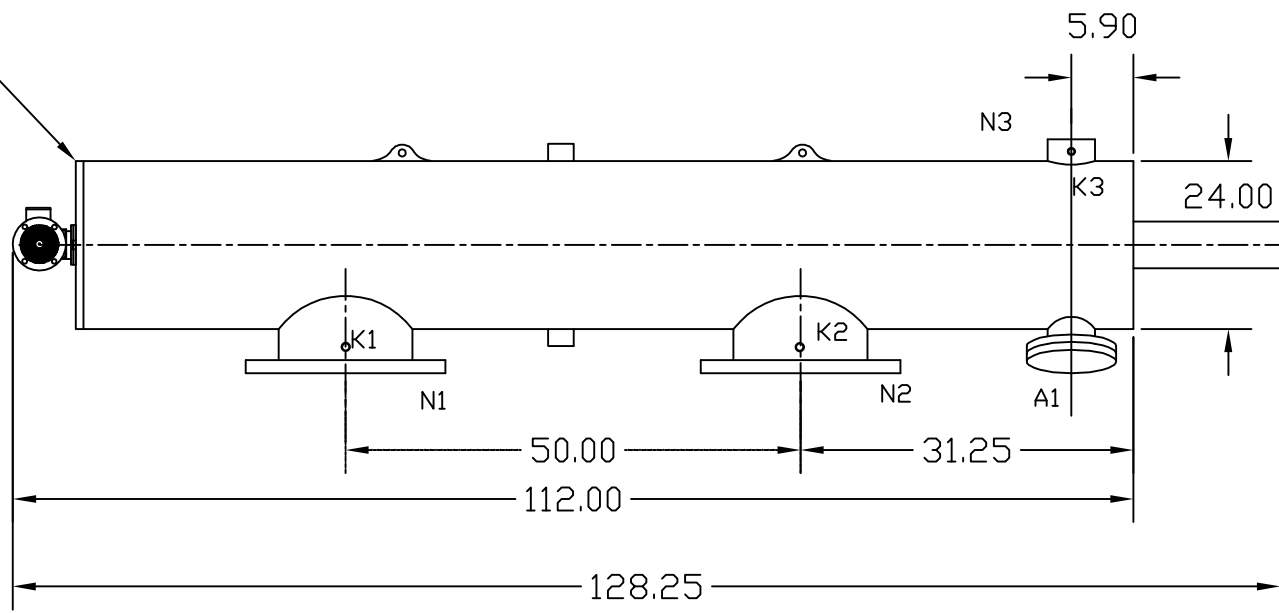
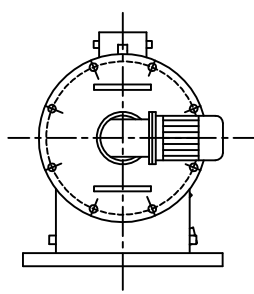


REVISIONS				
ZONE	REV	DESCRIPTION	DATE	APPROVED

Must have min. 57" clearance for screen removal



E
D
C
B
A

TECHNICAL DATA

Flow Rate	Max. 6000 GPM
Screen Size	___ Micron
Screen Area	16.0 Sq.Ft.
Working Temp.	200 deg. F
Working Pressure	150 PSI
Empty Weight	1000 lbs.
Full Weight	2650 lbs.

NOZZLE	CONNECTION	TYPE OF CONNECTION	SIZE	RATING
A1	Service Port	Flanged	3.5" ASA	150 lbs. F.F. w/Blind
K1	Hi. Press. Conn.	Threaded	1/4" NPT(2)	
K2	Low Press. Conn.	Threaded	1/4" NPT(2)	
K3	Flushoutlet Conn.	Threaded	1/4" NPT(2)	
N1	Inlet	Flanged	14" ASA	150 lbs. F.F.
N2	Outlet	Flanged	14" ASA	150 lbs. F.F.
N3	Flushoutlet	Threaded	2" NPT	

UNLESS OTHERWISE SPECIFIED DIMENSIONS ARE IN INCHES
TOLERANCES
DECIMALS ANGULAR
.XX ± .05 ± 0.5 DEG.
.XXX ± .01

AUTOMATIC FILTERS, INC.
2672 S. LA CIENEGA BLVD.
LOS ANGELES, CA 90034
(310) 839-2828 FAX (310) 839-6878

TITLE
LPF-14LP

DRAWN Chris McAndrew	DATE 1/25/10
CHECKED	
DESIGN	

SIZE A	DWG NO. LPF-14LP	REV 0
NTS		SHEET OF