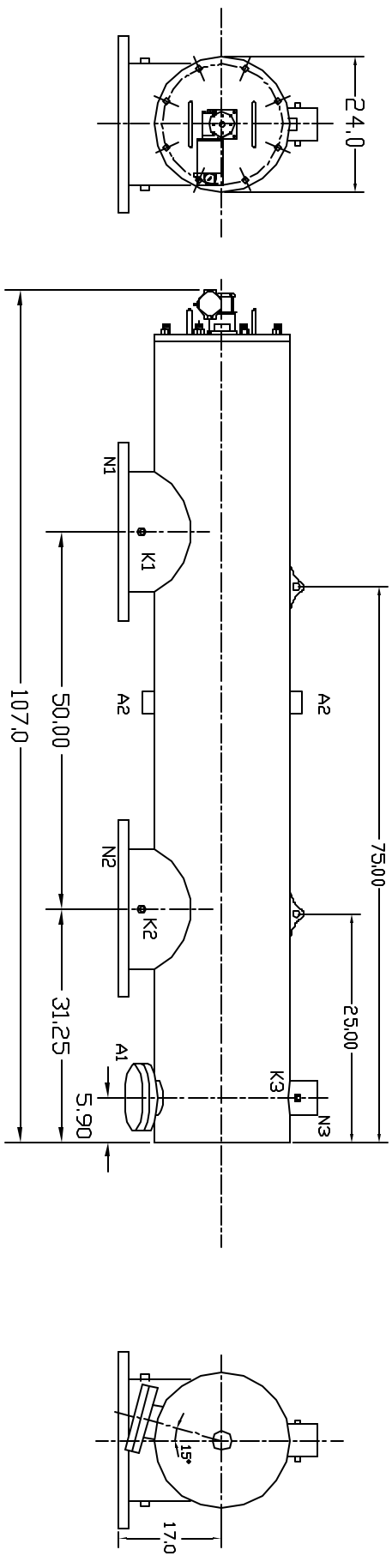


REVISED		DESCRIPTION	DATE	APPROVED
ZONE	REV			



TECHNICAL DATA

Flow Rate	Max: 6000 GPM
Screen Size	_____ Micron
Screen Area	16 sq.ft.
Working Temp.	200 deg. F
Working Pressure	150 PSI
Empty Weight	1000 lbs.
Full Weight	_____ lbs.

NOZZLE	CONNECTION	TYPE OF CONNECTION	SIZE	RATING
A1	Service Port	Flanged	3.5"	150 lbs. R.F. w/Blind
A2	Pressure Release	Threaded	1" NPT(2)	
K1	Hi. Press. Conn.	Threaded	1/4" NPT (2)	
K2	Low Press. Conn.	Threaded	1/4" NPT (2)	
K3	Flushoutlet Conn.	Threaded	12" ASA	150 lbs. F.F.
N1	Inlet	Flanged	12" ASA	150 lbs. F.F.
N2	Outlet	Flanged	2" NPT	
N3	Flushoutlet	Threaded		

UNLESS OTHERWISE SPECIFIED
 DIMENSIONS ARE IN INCHES
 DECIMALS FRACTIONS ANGULAR
 XX ± .003 1/16 DIA
 XXX ± .01

AUTOMATIC FILTERS, INC.
 2672 S. LA CIENEGA BLVD.
 LOS ANGELES, CA 90034
 (310) 839-2828 FAX (310) 839-6878

DRAWN	Daniel Stenberg	DATE	10-24-06
CHECKED			
DESIGN			
TITLE		SIZE	REV
LPI12-XLP		A	1
		DWG NO	LPI12-XLP-2
		SHEET	OF